



USA
PRT

www.usaprt.com

USAPRT

Ben Barnes Group



Garriott Enterprises



Austin Based Gaming Leader

ULTIMA, AVATAR, MMORPGS



NCSOFT®



Global Exploration Leader

FRONTIERING COMPANIES



October 12 2008

#483 Person to Orbit Earth
6th Private Citizen
1st Second Generation American



Post Flight Focus on Civics



National Environmental Hall of Fame®

Honoring Top Environmentalists in Every Community

AUSTIN >>> PRT

Are YOU a regular user of public transit? I am NOT a public Transit user.

- Rarely the commuter's best choice
 - Not on demand
 - Must go to a stop and wait in weather
 - Not point to point
 - Must follow their route, including exchanges
 - Not full speed to destination
 - Numerous stops for passenger loading, unloading
 - Involved in or creates traffic
 - Specialty lanes displace other traffic
 - Not private –
 - Share seats, share environment, no spreading out



Buses & Trains CAN NOT Solve the Problem

- ◇ Operate ON the roadway in the traffic adding or effected
- ◇ Rail installation, massive investment and infrastructure impact
- ◇ Vehicle outweighs passengers & energy inefficient, unless full
- ◇ **UNIVERSALLY heavily subsidized cost per rider**

Self Driving Cars will only help “eventually”

- ◇ Self driving cars are coming!
- ◇ Self driving will help, a lot, eventually.
- ◇ It will take years to deploy, and years to replace existing fleets
- ◇ They will mitigate it getting worse
- ◇ **We need a solution NOW!**

Personal Rapid Transit

On Demand

Point to Point

Non Stop at Full Speed

Private

Low Cost

Low Infrastructure Impact

No Taxpayer Subsidies



What is PRT?

- ◇ Vehicle
 - ◇ Small lightweight 4 person “pod”
 - ◇ Computer driven
 - ◇ Electric (Battery operated)
 - ◇ Think automated “air conditioned golf cart”
- ◇ Guideways
 - ◇ Raised, lightweight, unpowered
 - ◇ One way, full speed, loading off guideway
- ◇ Stations/stop
 - ◇ Vehicles wait for you, charging
 - ◇ Often in buildings or parking garages
- ◇ Multiple available options
 - ◇ Known: Cost, ridership, safety, maintenance
- ◇ Throughput of people as good or better than other transit options

Most Important Point

- ◆ Superior Solution at Fractional Cost
 - ◆ Light Rail
 - ◆ ~\$1.5B
 - ◆ ~10 mile
 - ◆ Inefficient transit line
 - ◆ PRT
 - ◆ ~\$100M
 - ◆ ~7 miles
 - ◆ Superior transit web
- ◆ NO TAXPAYER DOLLARS
 - ◆ Can be completely privately financed
 - ◆ Available to build NOW!

Example PRT User Experience

Vehicles wait for you while charging



Select Destination



Board Vehicle



ADA, Bikes, Families



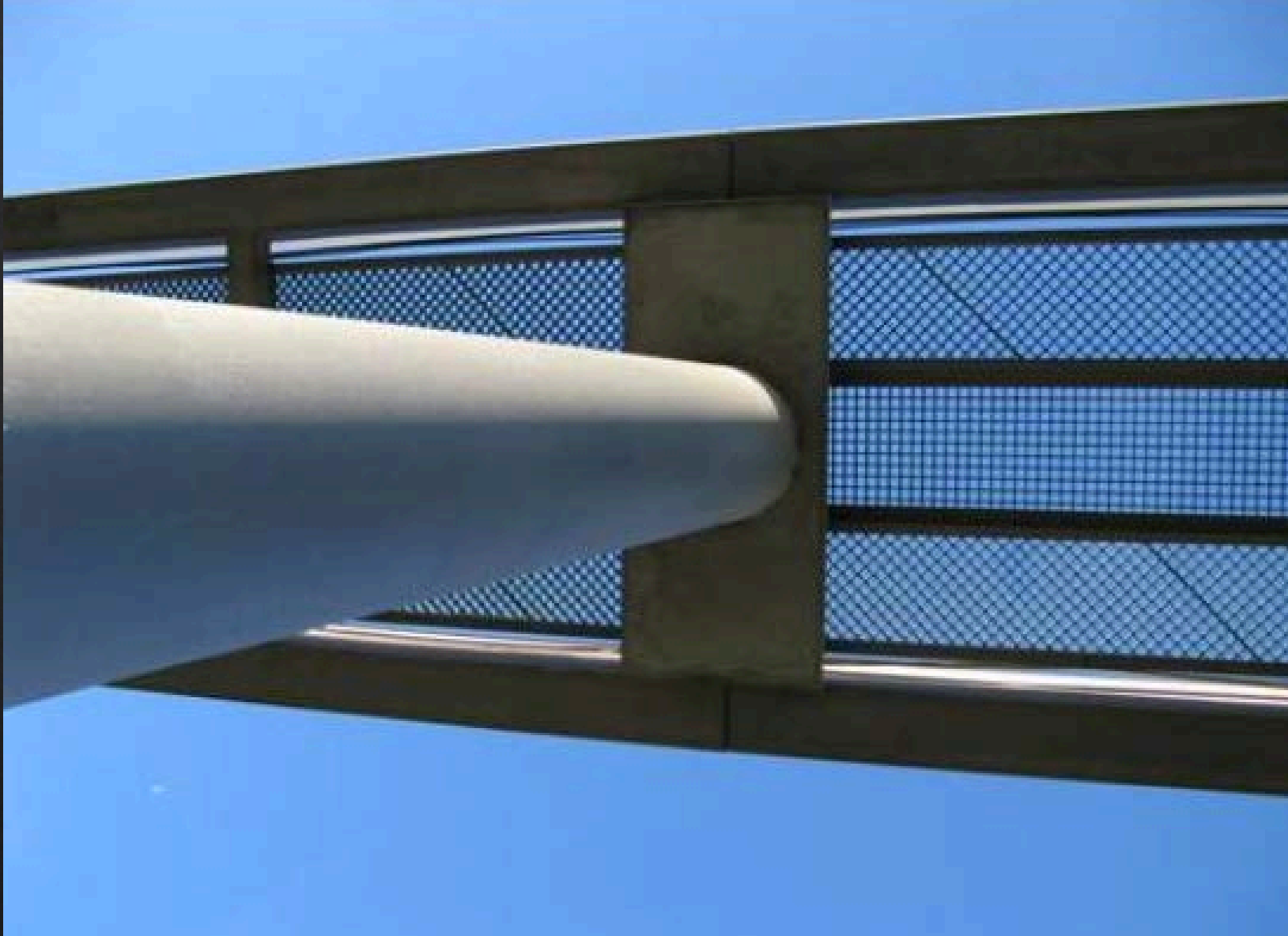
Sit & Press “Go”



Direct onto Full Speed One Way track



Light Unpowered Elevated Guide Ways



Full Speed & Non-Stop to Destination



Private Comfortable Fast



Easy 24/7 Monitoring



Integrates with Existing Infrastructure



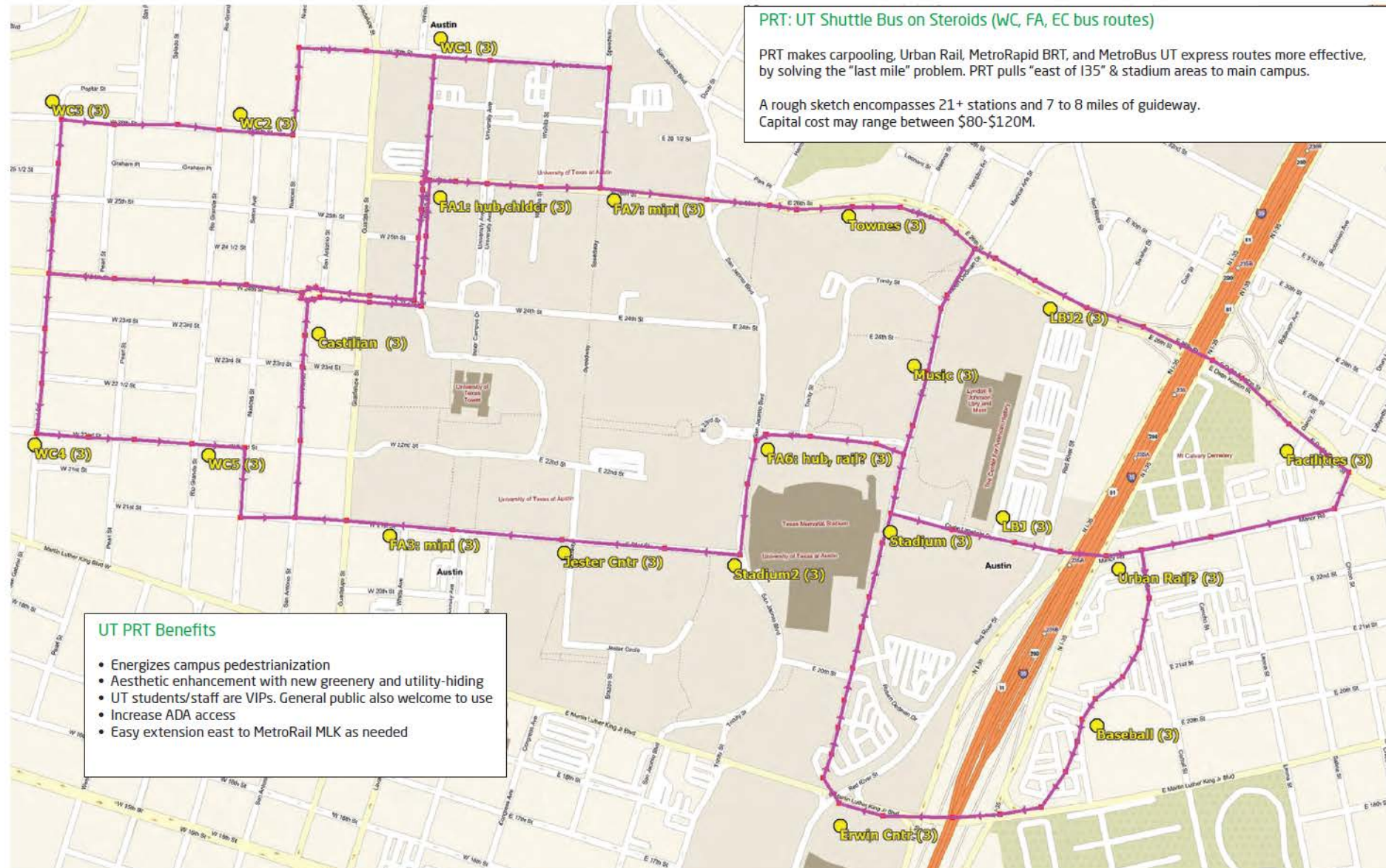
Direct into 2nd Floor Garages & Buildings



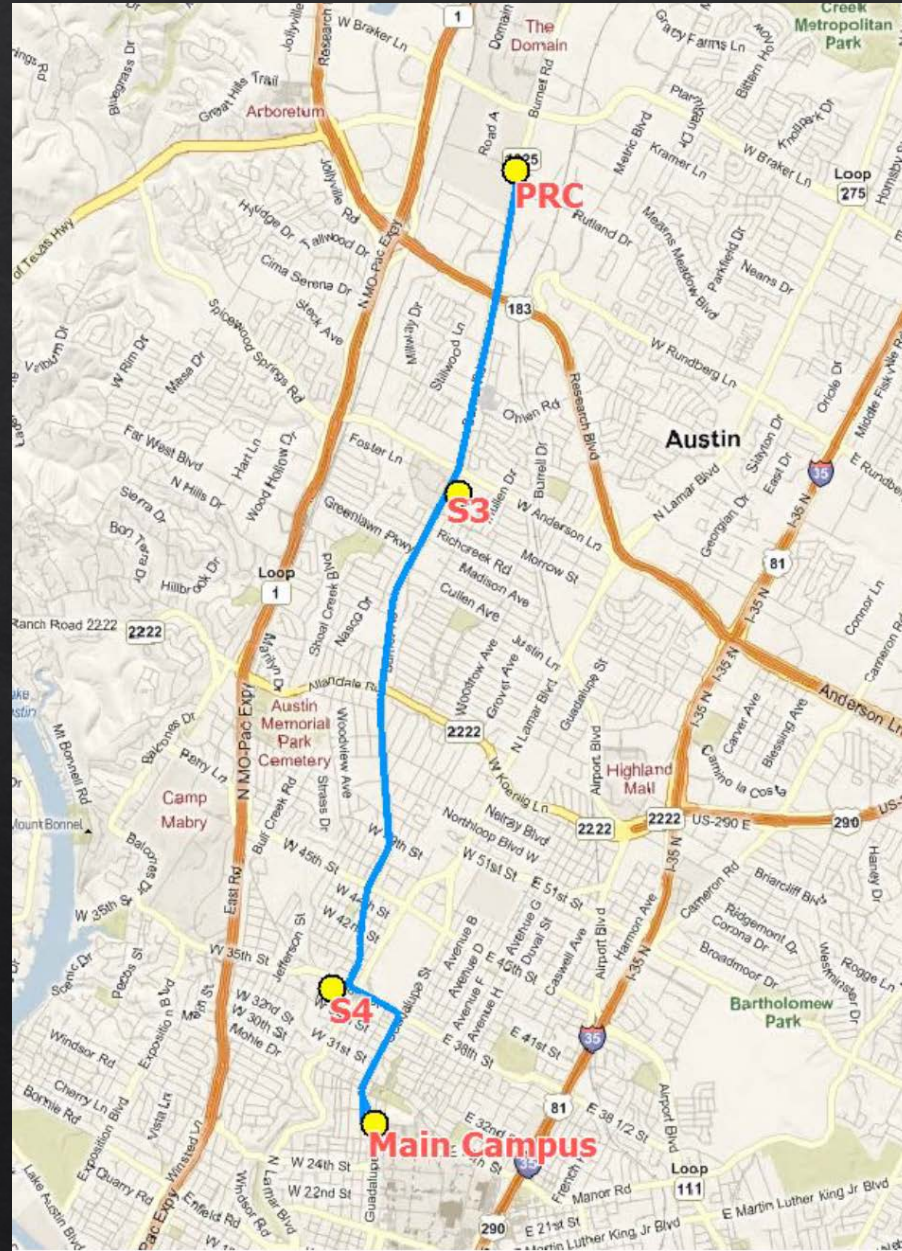
Personally Funded Extensive Study



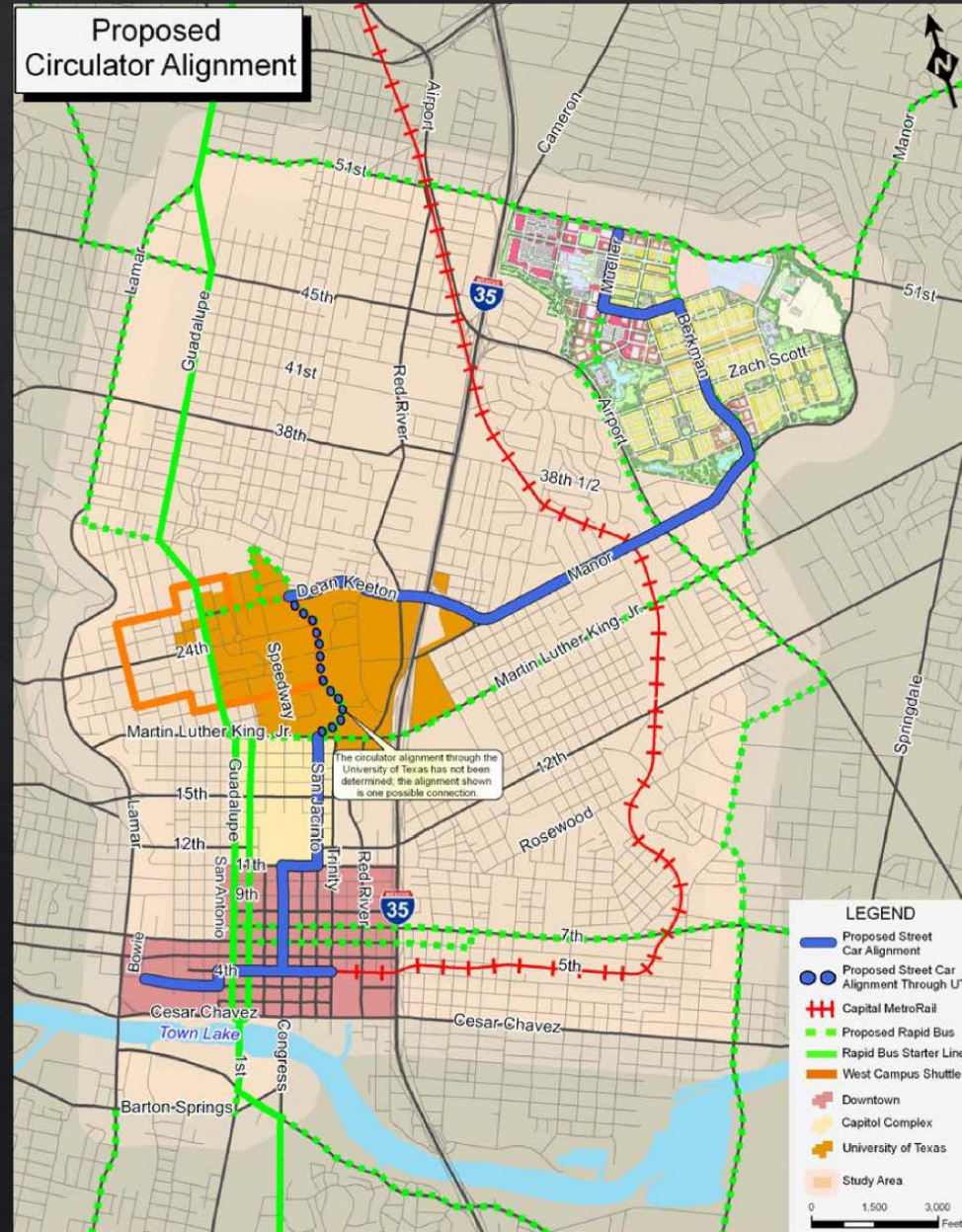
Campus 40 Acres & East of I35



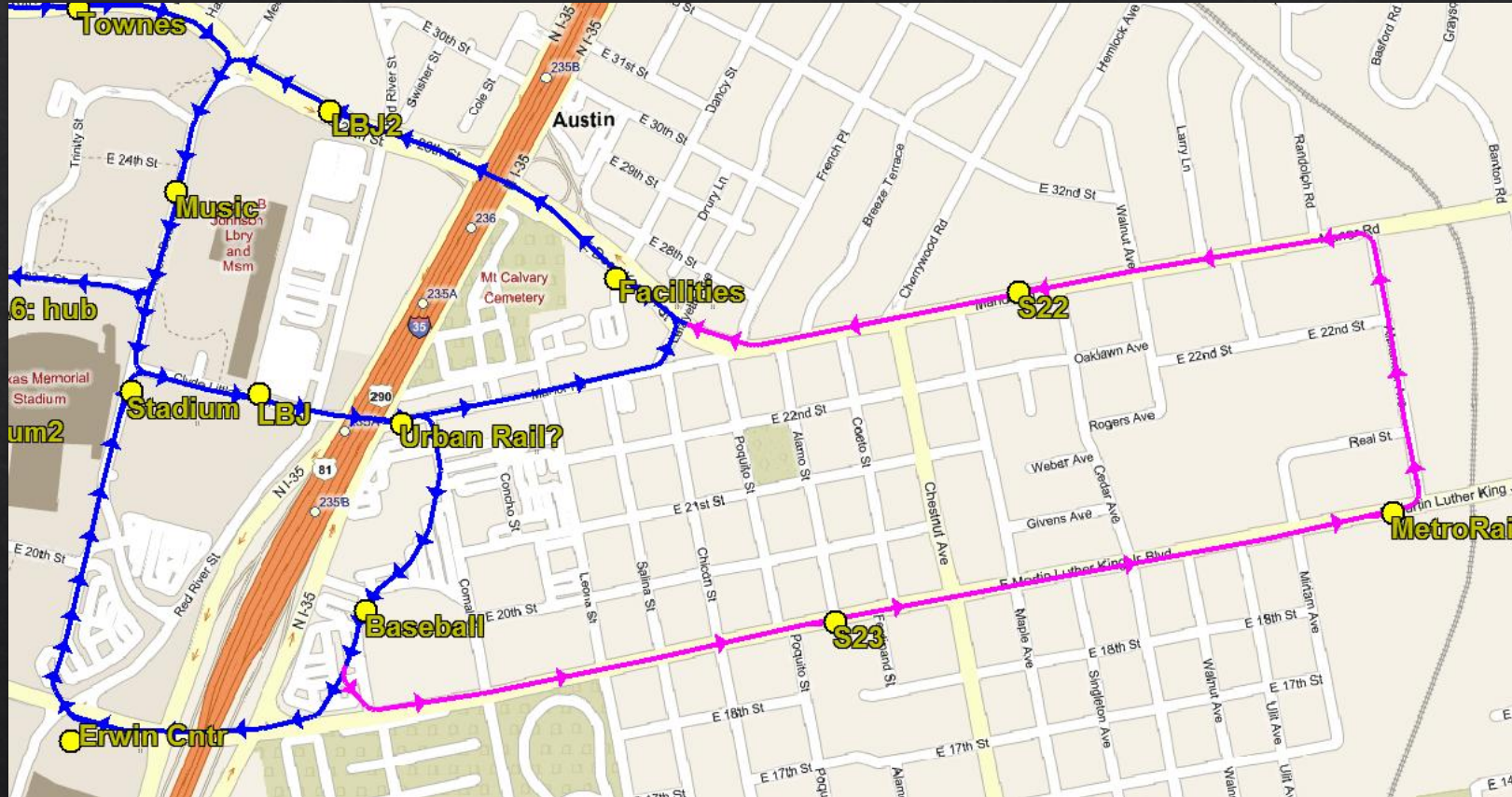
JJ Pickle



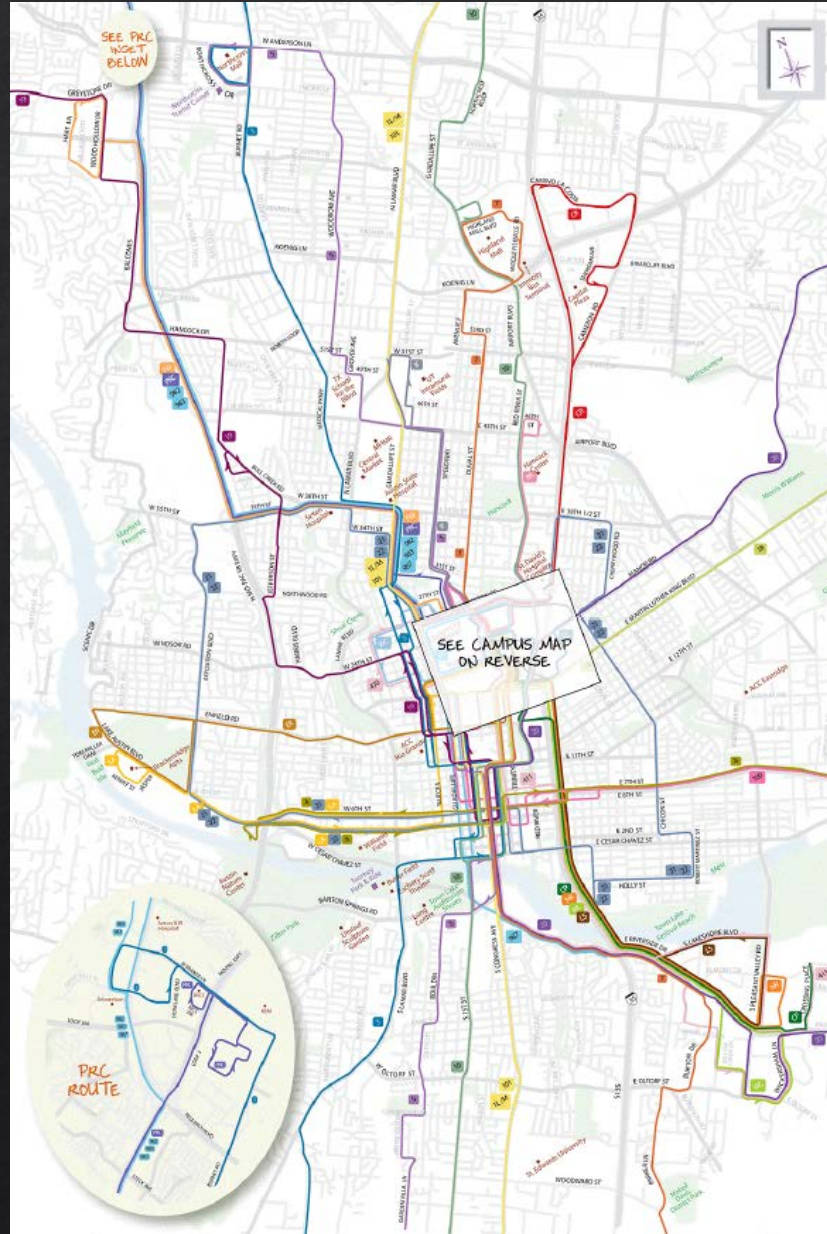
Mueller & Downtown



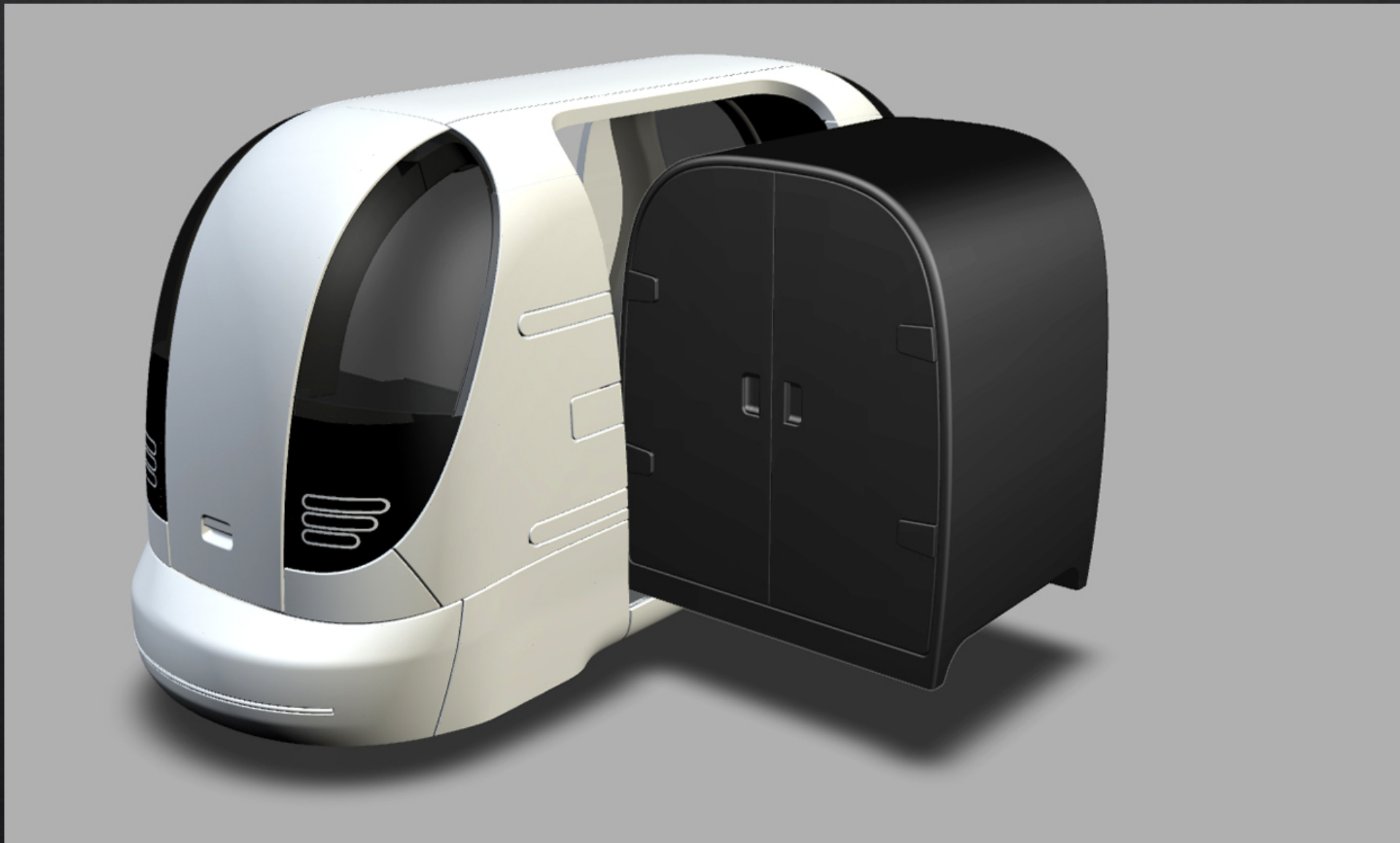
Metro Rail Extension



Airport Extension



Downtown Airline Check-in



UT Event Surge Studies

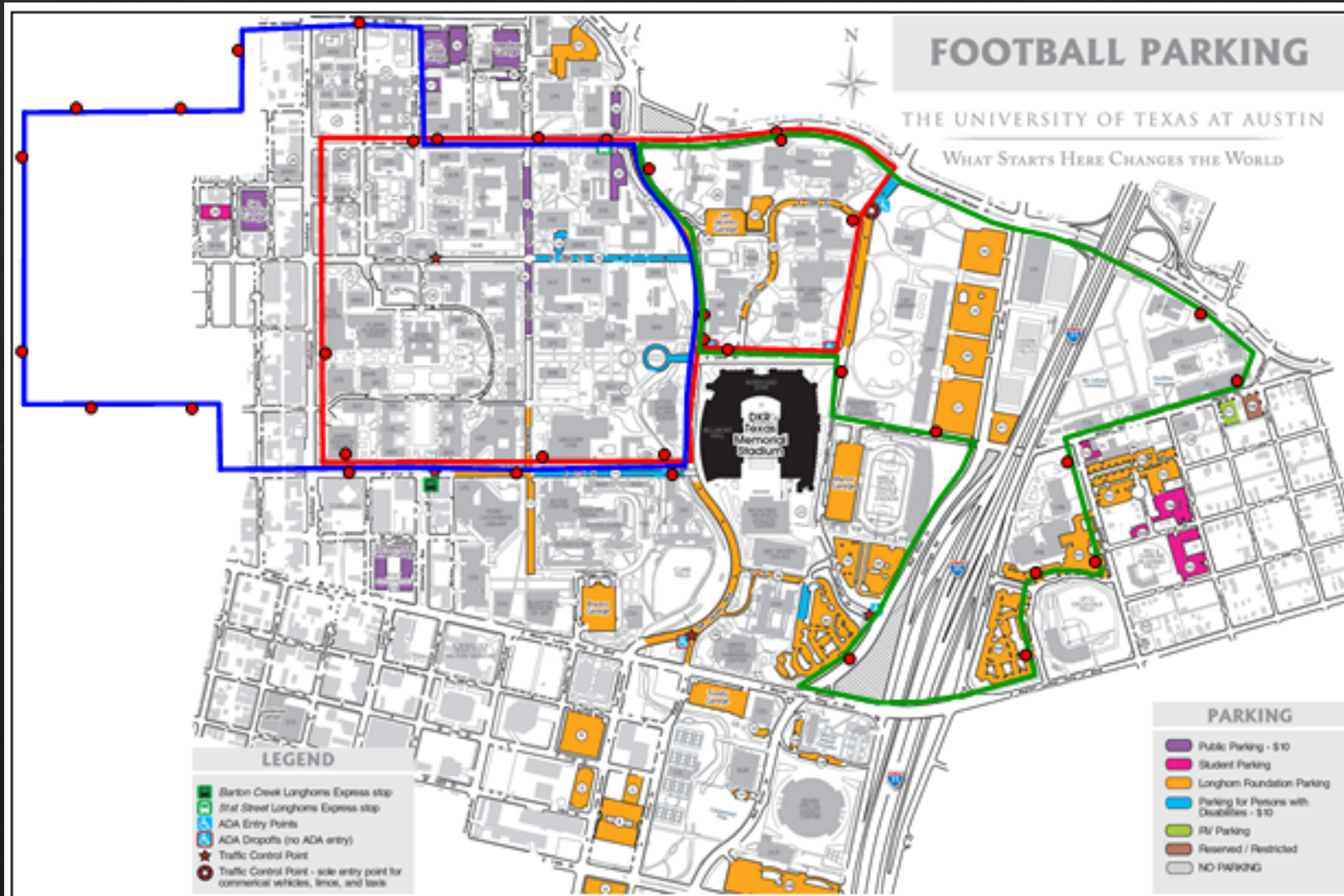


Figure 6.11: Football parking

Actual UT Ridership

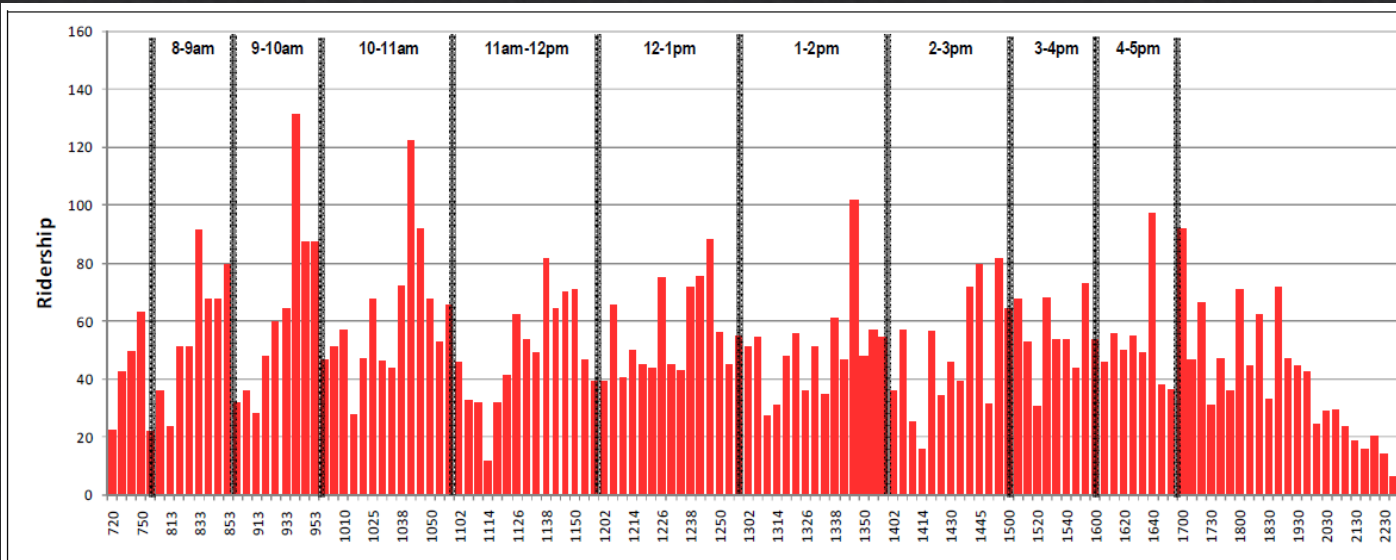


Figure 6.4: 640 FA - Wednesday Ridership Average by Trip - Fall 2008

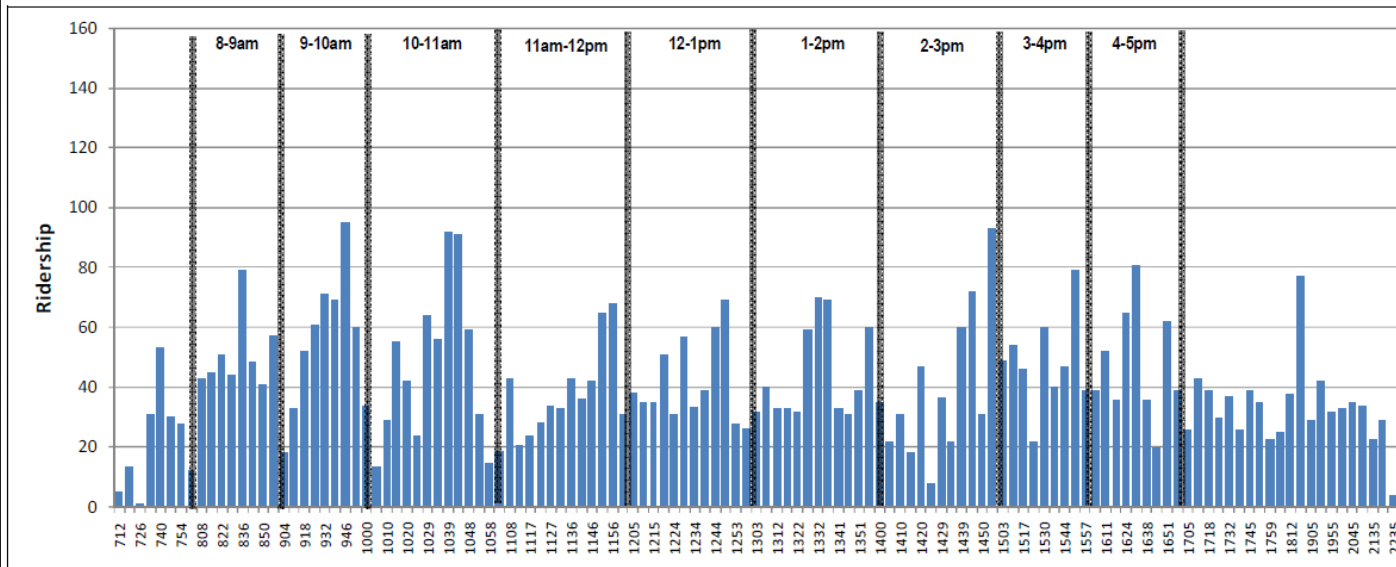
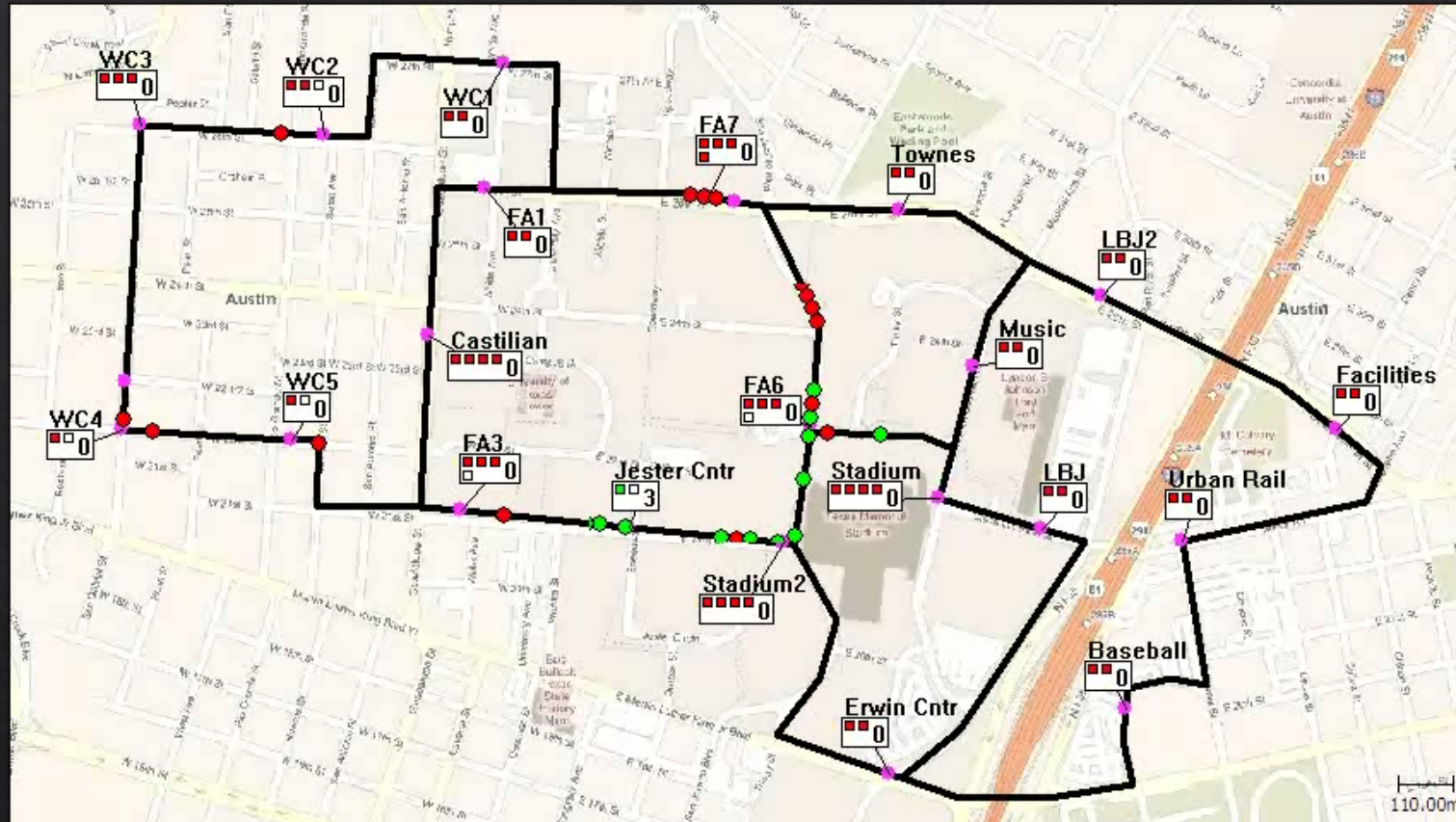


Figure 6.5: 642 WC – Wednesday Ridership Average by Trip - Fall 2008

UT Data - Ultra Sim



Pearl & 24th Before PRT



Pearl & 24th with PRT



Dean Keaton Before PRT



Dean Keaton with PRT



Easy I35 Underpass



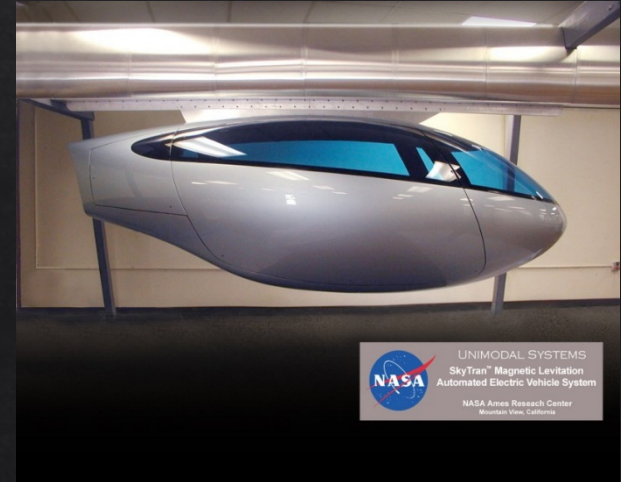
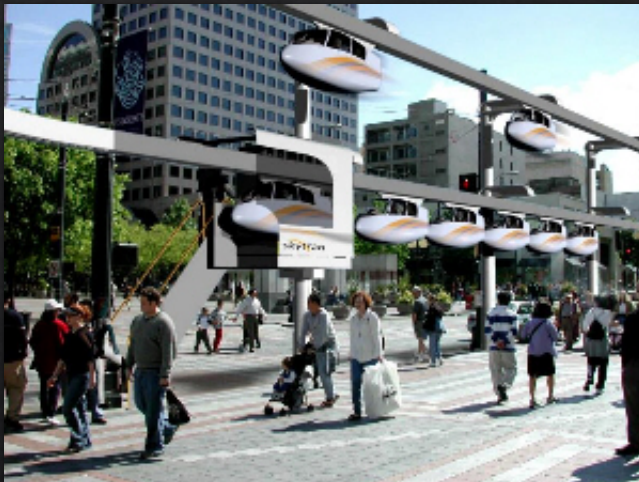
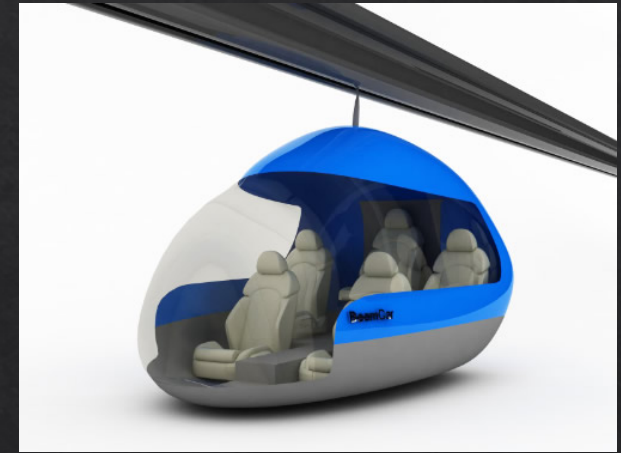
Guideway Style



Maintenance Bay



Emerging PRT Developers



Operational NOW at Heathrow T5



PRT Benefits to Austin

- ◇ Increase Access while Reducing Traffic
 - ◇ For UT brings together campuses and housing areas
 - ◇ For Austin Connects CBD & New developments
 - ◇ Scalable to whole city
- ◇ Internet type effect of scale
 - ◇ Eventually replaces school busses
 - ◇ Downtown airport check-in
 - ◇ Malls & office buildings will want “in house” stops
- ◇ Green / Clean / Silent
- ◇ Dependable, Sustainable, Expandable Technology
 - ◇ Trains had 100 years – end of tech cycle
 - ◇ PRT will get faster & shorter headway times

PRT Now!

- ◇ Austin needs a solution that works NOW!
 - ◇ Austin transit solution LONG overdue, rail failure set back
- ◇ PRT is a “last mile solution” the larger the “web” the better
 - ◇ Mass Transit, School Transport, Trash, Secure Cars
- ◇ Start with UT Core, expand
 - ◇ JJ Pickle, Downtown, Mueller, Airport, Neighborhoods
- ◇ Privately Funded
 - ◇ Revenues: Ridership, Advertising, & Real Estate Appreciation
 - ◇ Locally built, rapid assembly, lift onto poles

My ask of CoA UTC

- ◆ We are offering to finance and build
 - ◆ We do NOT need taxpayer money!
 - ◆ We do NEED political support!
- ◆ What do you need from us to gain your support?
 - ◆ UT study is available
 - ◆ Consortium now aligning and can send LOI/LOS
 - ◆ Public outreach campaign in progress



USA
PRT

www.usaprt.com

@RichardGarriott

Richard@Garriott.com