

# BARTON SPRINGS CONSERVANCY



THE EDUCATIONAL EXPERIENCE AT BARTON SPRINGS

# BARTON SPRINGS POOL MASTER PLAN

---

*Concepts for Preservation and Improvement*





## PARTNERSHIP ANNOUNCEMENT - NEWS CONFERENCE

MONDAY, OCTOBER 26, 2015 AT 10:00 AM

BEVERLY S. SHEFFIELD EDUCATION CENTER - 2201 BARTON SPRINGS ROAD



The Austin Parks and Recreation Department is pleased to announce its partnership with the Barton Springs Conservancy. Please join us to learn about the Zilker Park Improvement Projects at Barton Springs and the Conservancy's mission.

RSVP to Austin Parks and Recreation by October 21, 2015  
at 512-974-6723 or [parks@austintexas.gov](mailto:parks@austintexas.gov)



*The City of Austin is proud to comply with the Americans with Disabilities Act. If you require assistance for participation in our programs or use of our facilities, please call (512) 974-6700.*



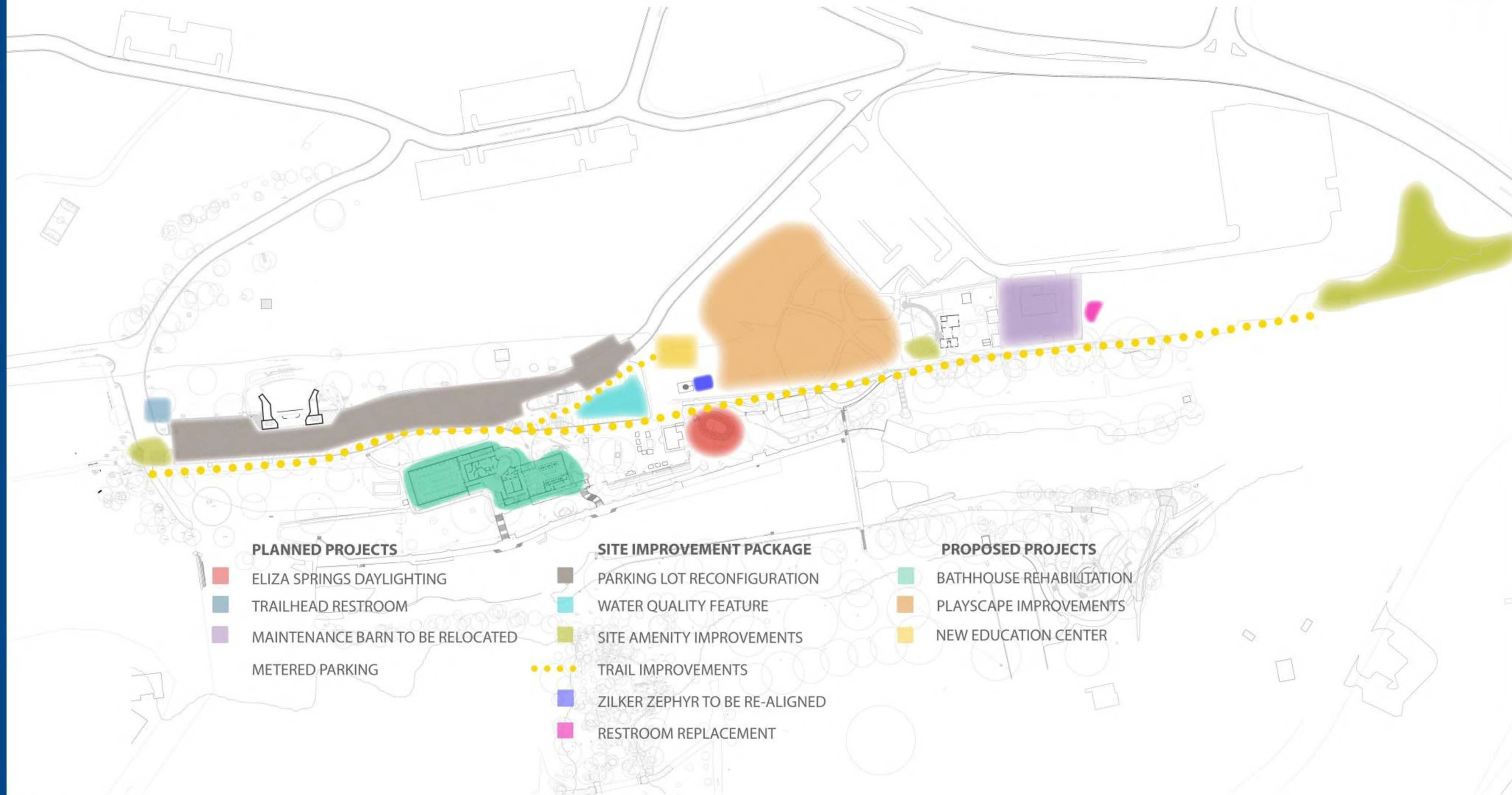
BARTON SPRINGS CONSERVANCY



OCTOBER 26, 2015

P R E S S   C O N F E R E N C E   A T   B A R T O N   S P R I N G S   B A T H H O U S E

# SITE PLAN RECOMMENDED PROJECTS

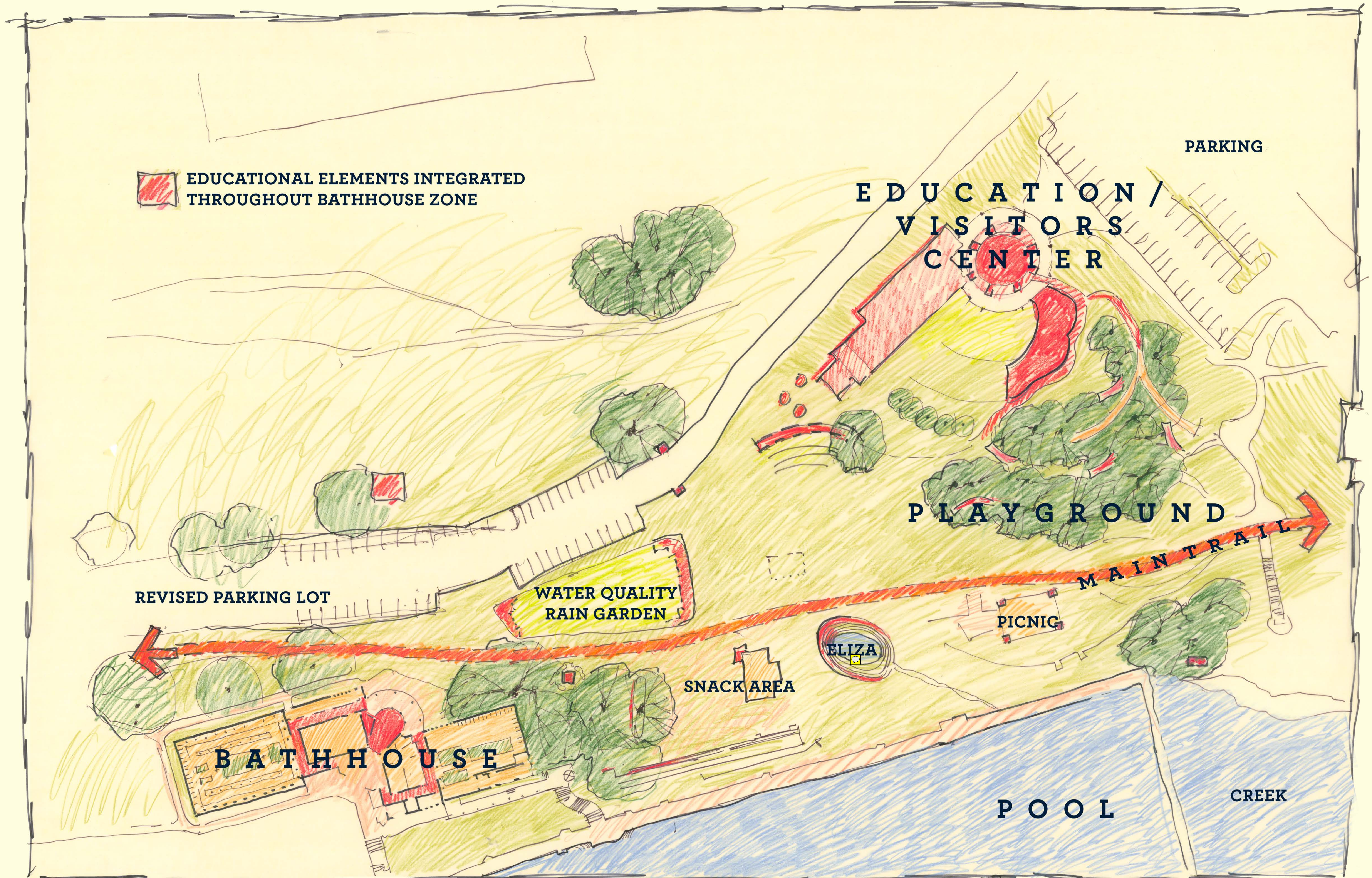


- | PLANNED PROJECTS                   | SITE IMPROVEMENT PACKAGE         | PROPOSED PROJECTS          |
|------------------------------------|----------------------------------|----------------------------|
| ■ ELIZA SPRINGS DAYLIGHTING        | ■ PARKING LOT RECONFIGURATION    | ■ BATHHOUSE REHABILITATION |
| ■ TRAILHEAD RESTROOM               | ■ WATER QUALITY FEATURE          | ■ PLAYSCAPE IMPROVEMENTS   |
| ■ MAINTENANCE BARN TO BE RELOCATED | ■ SITE AMENITY IMPROVEMENTS      | ■ NEW EDUCATION CENTER     |
| ■ METERED PARKING                  | ●●●● TRAIL IMPROVEMENTS          |                            |
|                                    | ■ ZILKER ZEPHYR TO BE RE-ALIGNED |                            |
|                                    | ■ RESTROOM REPLACEMENT           |                            |



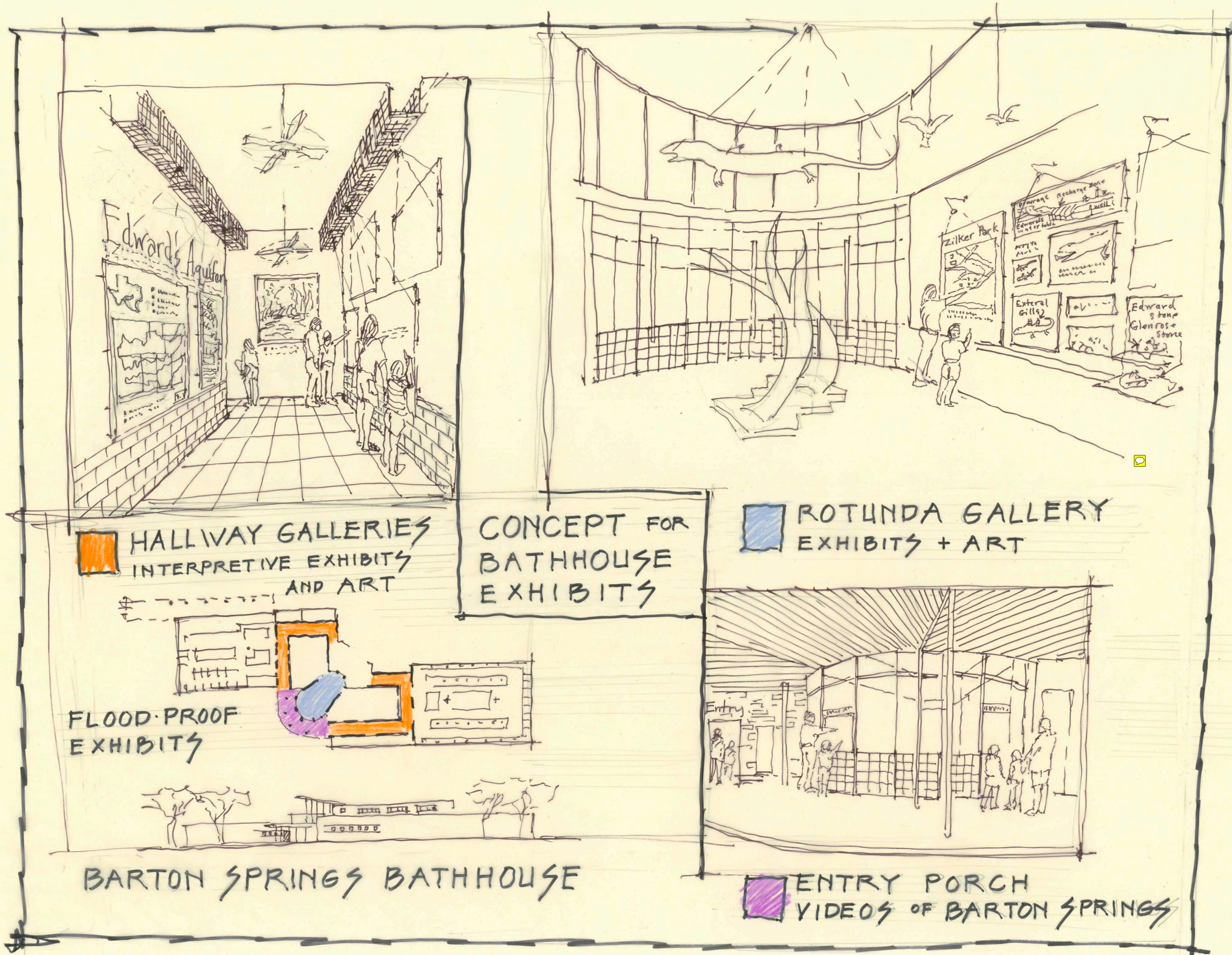
## ZILKER PARK IMPROVEMENTS AT THE BATHHOUSE ZONE

# SITE PLAN



BARTON SPRINGS CONSERVANCY

# BATHHOUSE EDUCATION EXHIBITS



**HALLWAY GALLERIES**  
INTERPRETIVE EXHIBITS  
AND ART

CONCEPT FOR  
BATHHOUSE  
EXHIBITS

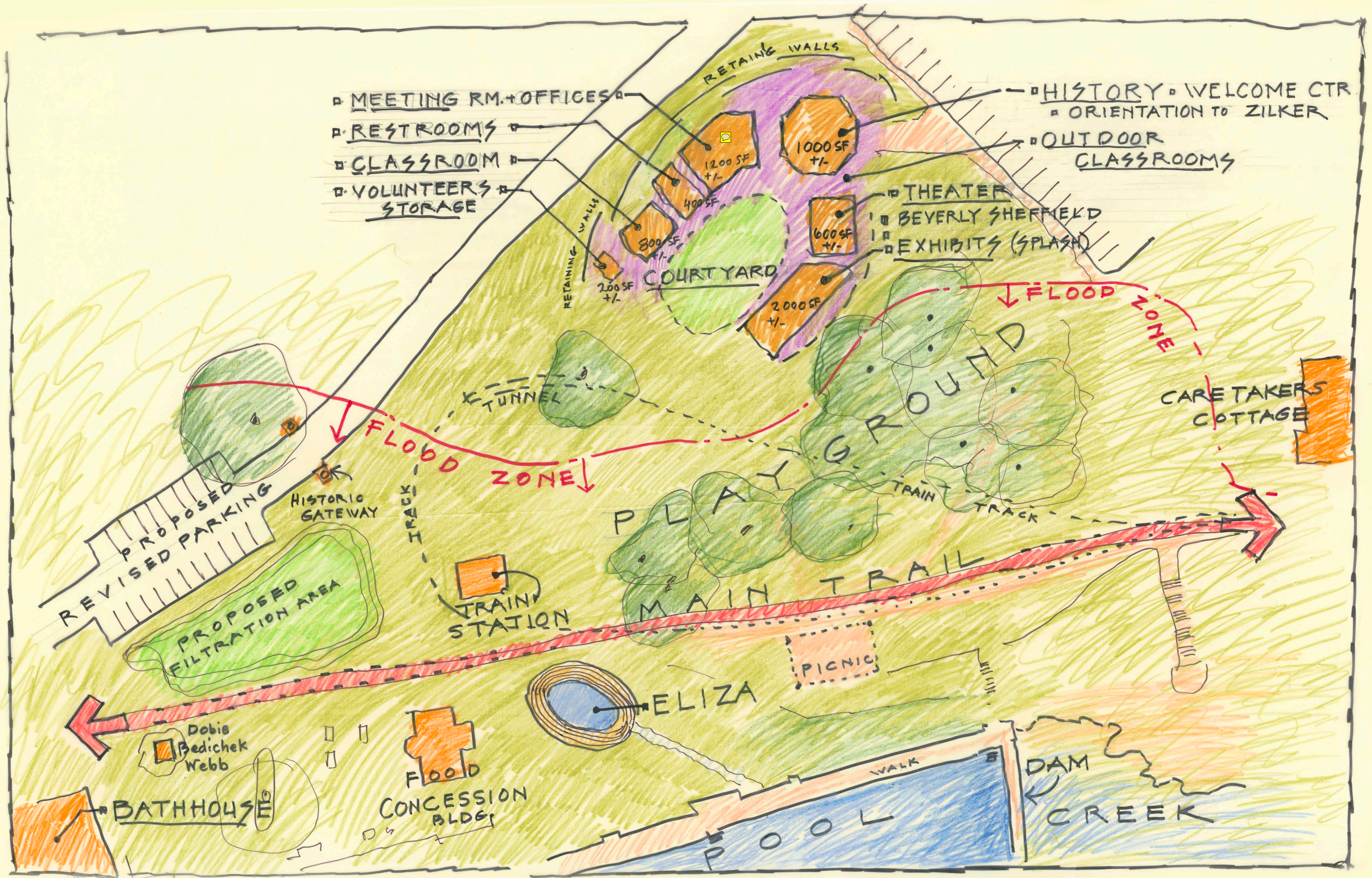
**ROTUNDA GALLERY**  
EXHIBITS + ART

FLOOD-PROOF  
EXHIBITS

**ENTRY PORCH**  
VIDEOS OF BARTON SPRINGS

BARTON SPRINGS BATHHOUSE

# CONCEPTS FOR A NEW EDUCATION BUILDING







INSPIRATIONAL IMAGES

BARTON SPRINGS CONSERVANCY

